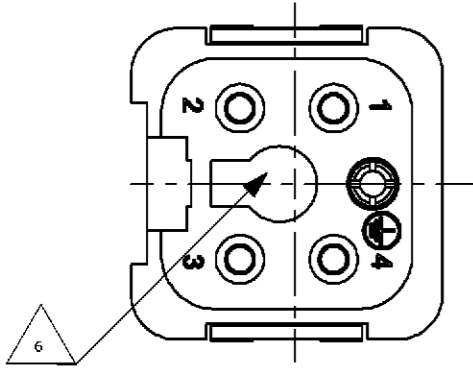


LOC		DIST		REVISIONS ÄNDERUNGEN			
AI	-	P	LTR	DESCRIPTION BESCHREIBUNG	DATE	DWN	APVD
PROJECT NR.				C1	PRINTING CORRECTED ECR-06-021058	01.09.2006	SR SM

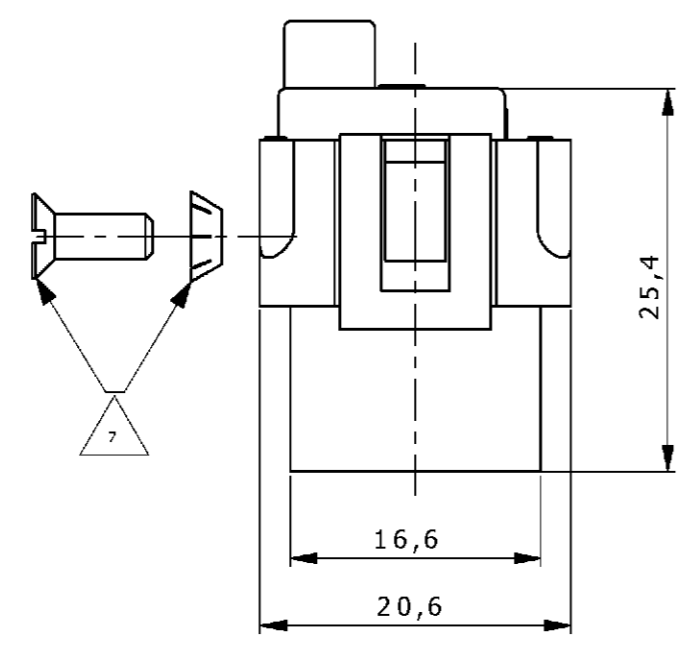
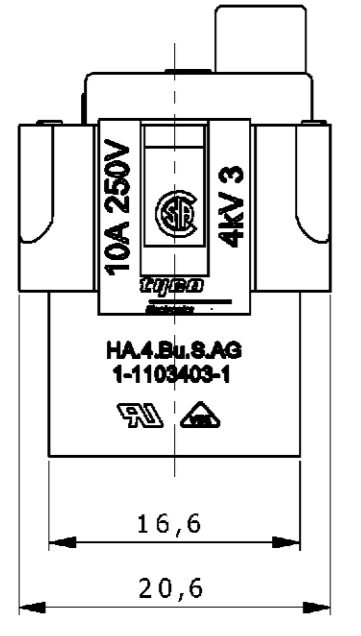
### NOTES

- 1 CONTACT: 1 TO 4  
SUITABLE SCREW CONTACTS: SERIES HA.3  
OUTER DIMENSIONS OF INSULATION: MAX. Ø3,4 MM
- 2 GROUNDING CONTACT:  
SUITABLE SCREW CONTACTS: SERIES HA.4  
OUTER DIMENSIONS OF INSULATION: MAX. Ø3,4 MM
- 3 SUITABLE HOOD SIZE 1: SERIES HA; HD; EMV AND HIP
- 4 SUITABLE INSERTION AND EXTRACTION TOOL:  
SCREWDRIVER 2,0x65
- 5 STANDARDS:  
DIN EN 61984; DIN EN 60664-1
- 6 POLARIZATION RIPS
- 7 POS. 8 AND POS.9 PACKED SEPARATE IN POLY BAG
- 8 AUTHORIZATION: UL; CSA; VDE; SEV
- 9 PACKAGING:  
10 SETS IN A CARTON, PRE-MOUNTED

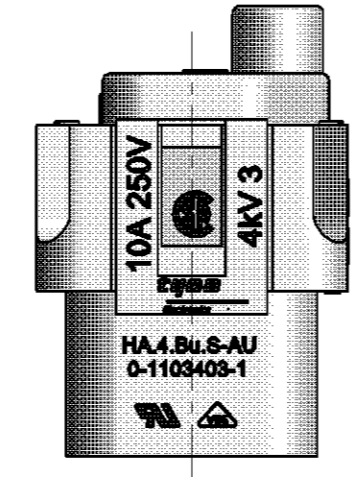
CONTACT ARRANGEMENT  
VIEW FROM CONNECTING SIDE



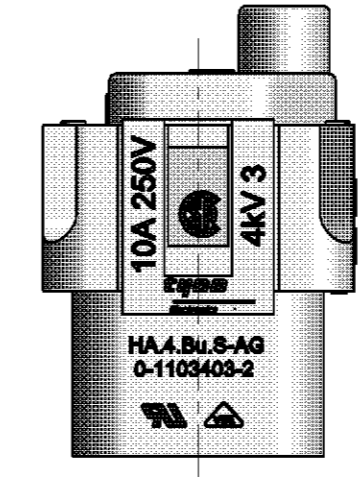
LATERAL PRINT  
PN 1-1



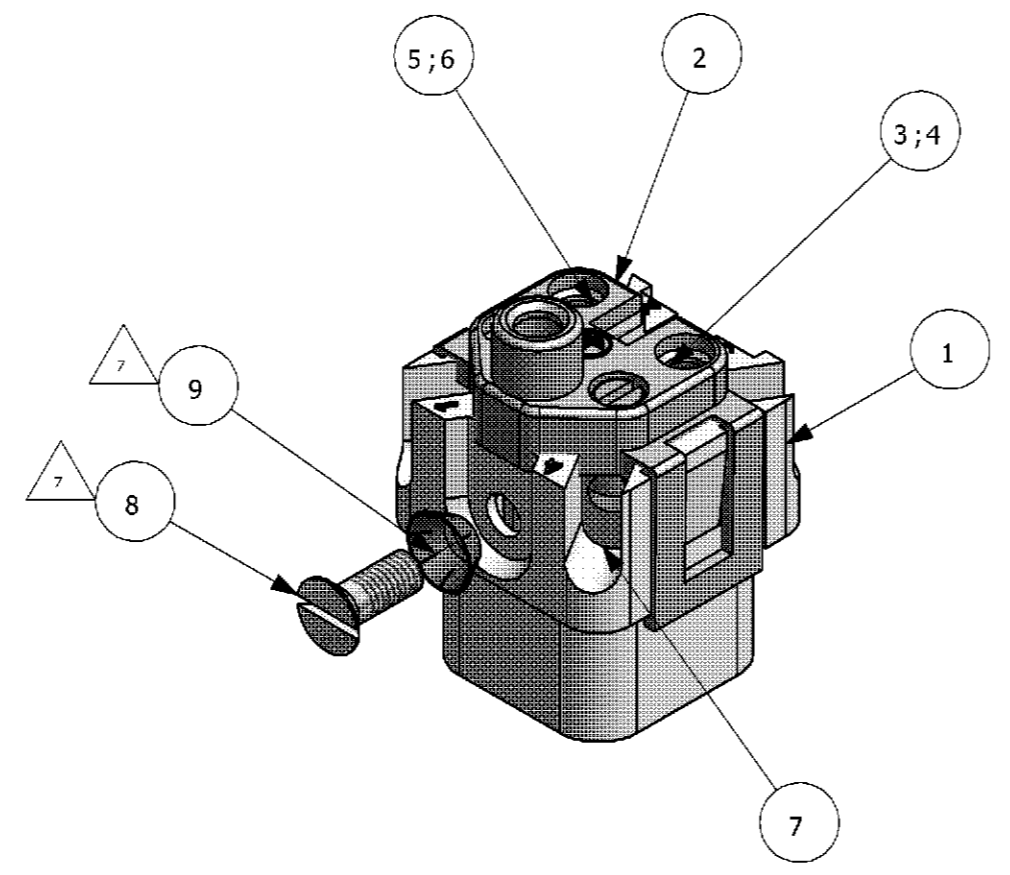
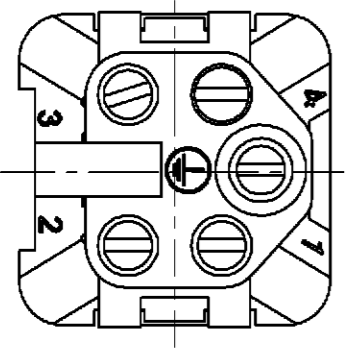
LATERAL PRINT  
PN 0-1



LATERAL PRINT  
PN 0-2



CONTACT ARRANGEMENT  
VIEW FROM TERMINATION SIDE



QTY	DESCRIPTION	MATERIAL	COLOR	SURFACE	ITEM	NOTES
1	1	SPRING WASHER	STEEL	ZINK PLATED	9	V3.2
1	1	SLOTTED COUNTER FLAT HEAD SCREW	STEEL	ZINK PLATED	8	M3x8
5	5	SLOTTED CHEESE HEAD SCREW	BRASS	NICKEL PLATED	7	M3x5.5
1	1	CONTACT SOCKET	BRASS	GOLD PLATED	6	
1	1	CONTACT SOCKET	BRASS	SILVER PLATED	5	
4	4	CONTACT SOCKET	BRASS	GOLD PLATED	4	
4	4	CONTACT SOCKET	BRASS	SILVER PLATED	3	
1	1	COVER	LEXAN	BEIGE	2	
1	1	MALE INSERT	LEXAN	BEIGE	1	

QTY	DESCRIPTION	MATERIAL	COLOR	SURFACE	ITEM	NOTES
0-2	0-1	1-1				

THIS DRAWING IS A CONTROLLED DOCUMENT FOR AMP INCORPORATED. IT IS SUBJECT TO CHANGE AND THE CONTROLLING ENGINEERING ORGANIZATION SHOULD BE CONTACTED FOR THE LATEST REVISION. DIESSES ZEICHNUNGSOKUMENT WIRD DURCH AMP INCORPORATED KONTROLLIERT. ÄNDERUNGEN, DIE DEM TECHNISCHEN FORTSCHRITT ÜBEREN, SIND VORZUHALTEN. DEN VEREINBARTETEN ANWENDEUNGSBEREICHEN SIEHEN SIE AMP ANWAKE.

DIMENSIONS:  
DIMENSIONEN:  
m m

TOLERANCES UNLESS OTHERWISE SPECIFIED:  
ALLGEMEIN TOLERANZEN

m. ISO 8013 - m H-E  
m. ISO 2768 - m H-E  
m. DIN 16981 - 140

0 PLC #  
1 PLC #  
2 PLC #  
3 PLC #  
ANGLES / WINKEL #

MATERIAL FINISH / OBERFLÄCHE / FARBE

WEIGHT / GEWICHT

DWN H.BRAUN 29.07.1997  
CHK KRAMER 29.07.1997  
APVD T.SCHNURPFEL 28.03.2006

NAME  
T.SCHNURPFEL  
PRODUCT SPEC. 108-74008  
APPLICATIO SPEC. 114-74010  
WEIGHT 0,0013 KG

tyco Electronics  
Tyco / Electronics AMP GmbH  
D - 53819 Neunkirchen

FEMALE INSERT  
HA.4.BU.S

SIZE A2 CAGE CODE 00779 DRAWING NO. 1103403  
RESTRICTED TO NUR FÜR

CUSTOMER DRAWING / KUNDENZEICHNUNG SCALE 1:1 SHEET 1 OF 1 REV. C1